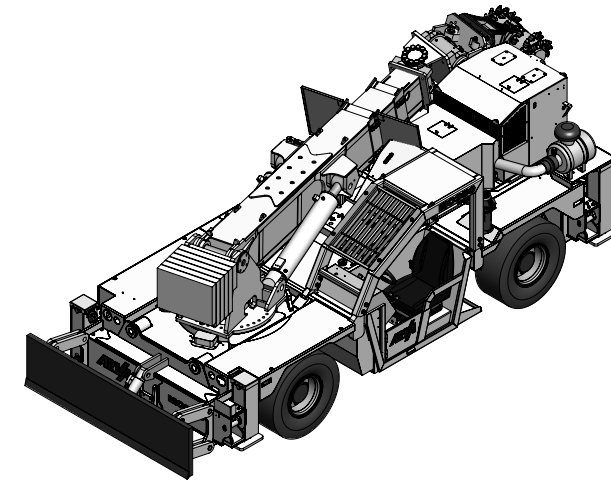
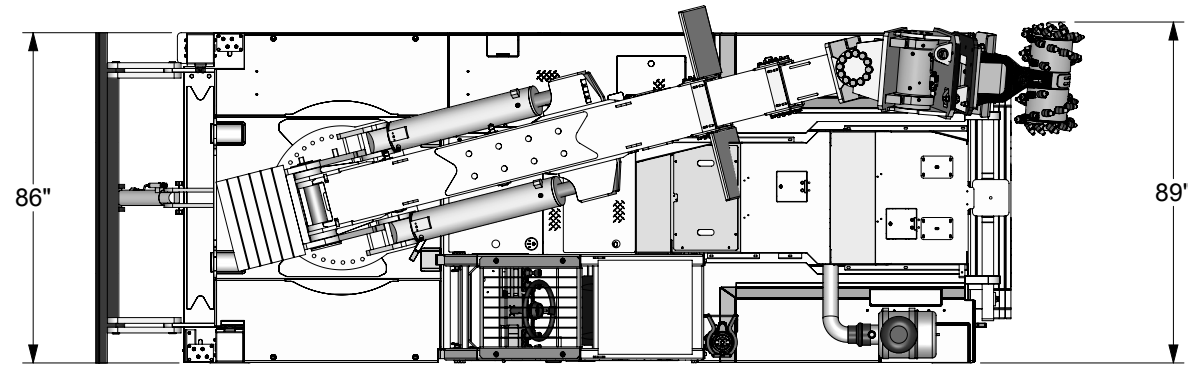


THIS PRINT AND DESIGN IS THE PROPERTY OF ARVA INDUSTRIES IS CONFIDENTIAL AND IS NOT TO BE REPRODUCED WITHOUT OUR PERMISSION AND IS TO BE RETURNED UPON REQUEST

DIMENSIONS ARE IN INCHES

FRACTIONAL ± 1/16
 DECIMAL .XX ±.025
 DECIMAL .XXX ±.010
 ANGLES ±1/2°

REMOVE ALL BURRS AND SHARP EDGES



MC350 SCALER:

BOOM: 3 SECTION, HYDRAULIC
 15.2 ft [4.64 m] RETRACTED
 24.9 ft [7.58 m] EXTENDED

BOOM ANGLE: + 46 DEGREES, - 11 DEGREES

AXLES: COMER INDUSTRIES WITH INTERNAL WET DISC SERVICE AND PARK BRAKES

TIRES: TROJAN SOFTCORE, 35x14.50x15 28 PLY

STEERING: TWO WHEEL, FOUR WHEEL AND CRAB

4 WHEEL DRIVE

ENGINE: CUMMINGS QSB4.5 130 hp, TIER 3

TRANSMISSION: FUNK 6 SPEED FORWARD AND 3 REVERSE

CANOPY: ROPS/FOPS CERTIFIED

CUTTING UNIT: ALPINE ROCKWHEEL D10
 OUTPUT SHAFT TORQUE: 1850 lbf.ft @ 3000 psi
 PICK FORCE: 2635 lbf @ 3000 psi
 OUTPUT SHAFT SPEED: 180 rpm @ 32 gpm
 PICK SPEED: 837 ft/min.
 # OF PICKS (ROCK DRUMS): 56 (0.76" SHANK)
 WEIGHT: 936 lb.

ANSUL 20 lb FIRE EXTINGUISHER

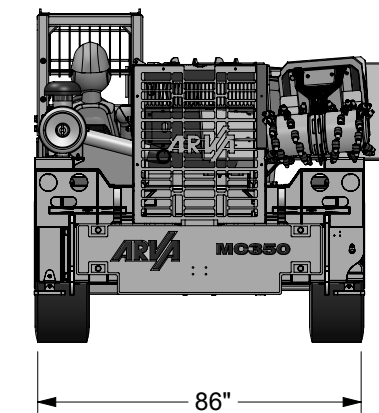
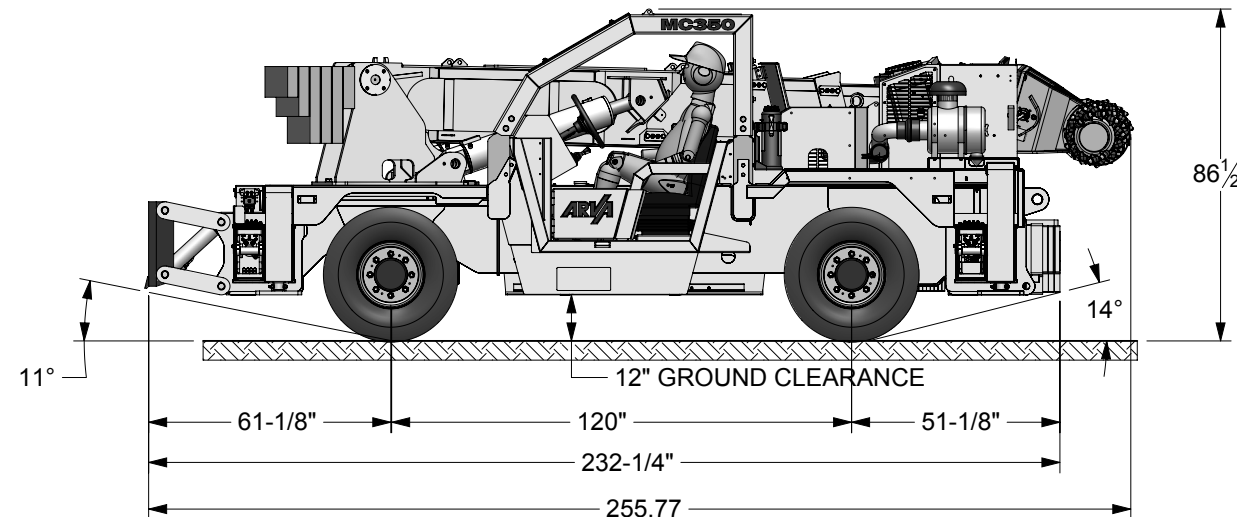
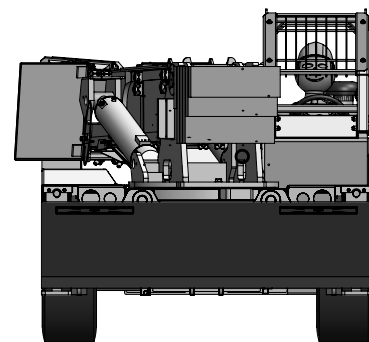
ANSUL A-101 FIRE SUPPRESSION SYSTEM

BACK-UP ALARM

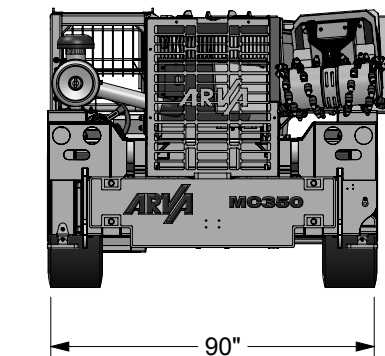
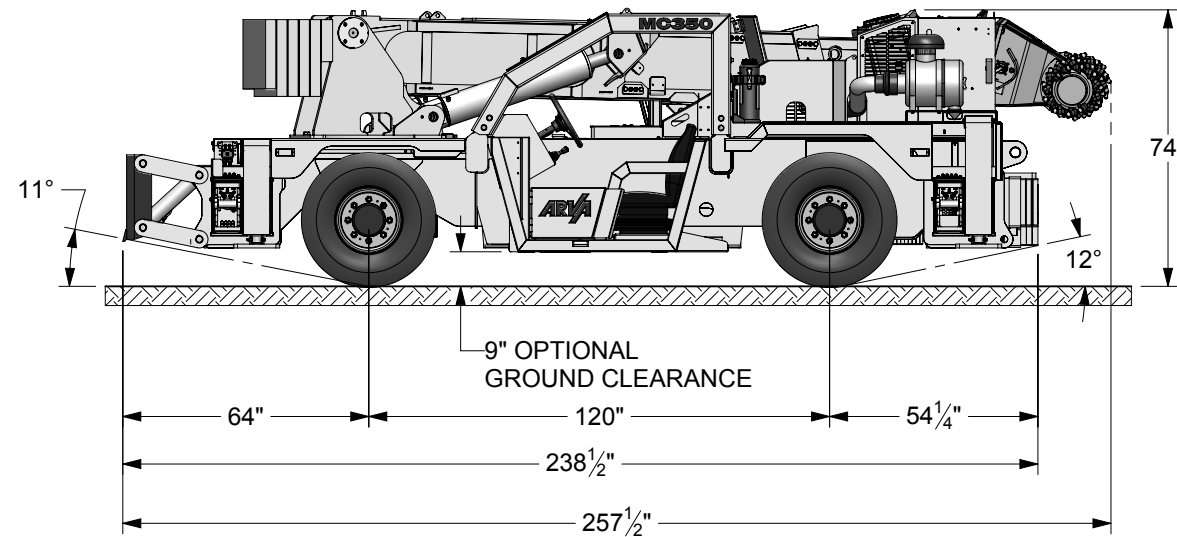
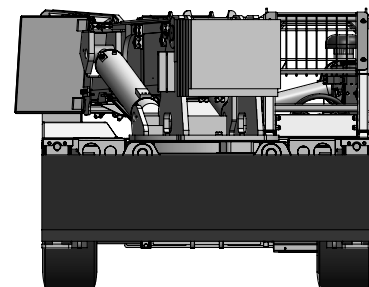
FRONT PUSH BLADE


TRAVEL SPEED: 18 km/h (11 mph) FORWARD
 18 km/h (11 mph) REVERSE

STANDARD MACHINE



OPTIONAL MACHINE



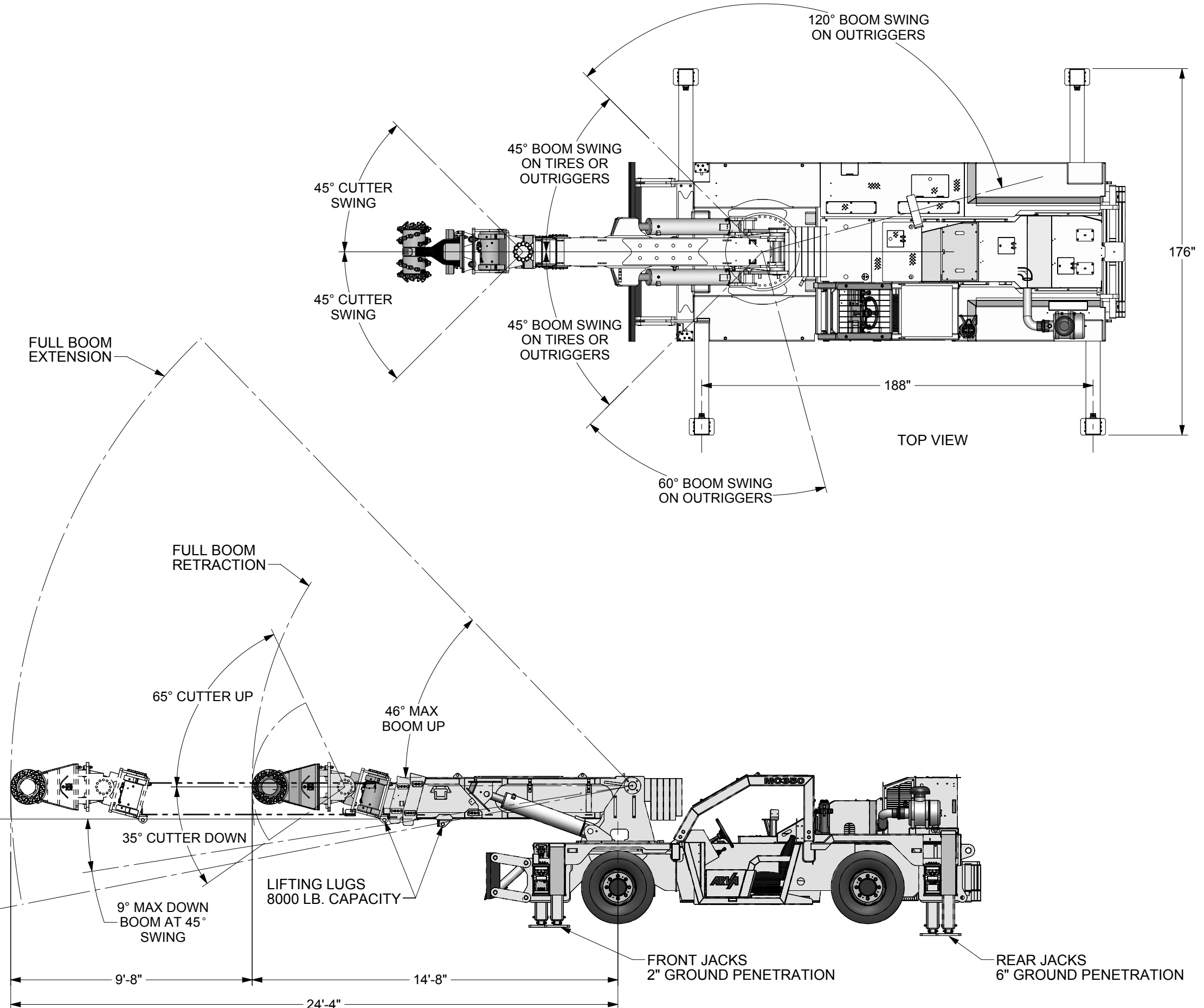
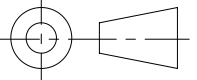
REV	DESCRIPTION	DATE	BY
 ARVA INDUSTRIES INC. 43 GAYLORD ROAD ST THOMAS ONT. CAN. N5P 3R9			
TITLE MC350 SCALER			
DRAWING BY	MODEL BY	DRAWN DATE (yyMMdd):	
CHK'D BY	LAST SAVED DATE:		
ASSY DWG	WEIGHT (lbs)		40,680
SIMILAR TO	SHEET 1 OF 8		
SCALE	DWG NO	REV	
1:50	EP1667		

THIS PRINT AND DESIGN IS THE PROPERTY OF ARVA INDUSTRIES
 IS CONFIDENTIAL AND IS NOT TO BE REPRODUCED WITHOUT OUR
 PERMISSION AND IS TO BE RETURNED UPON REQUEST

DIMENSIONS ARE IN INCHES

FRACTIONAL ± 1/16
 DECIMAL .XX ±.025
 DECIMAL .XXX ±.010
 ANGLES ±1/2°

REMOVE ALL BURRS AND SHARP EDGES



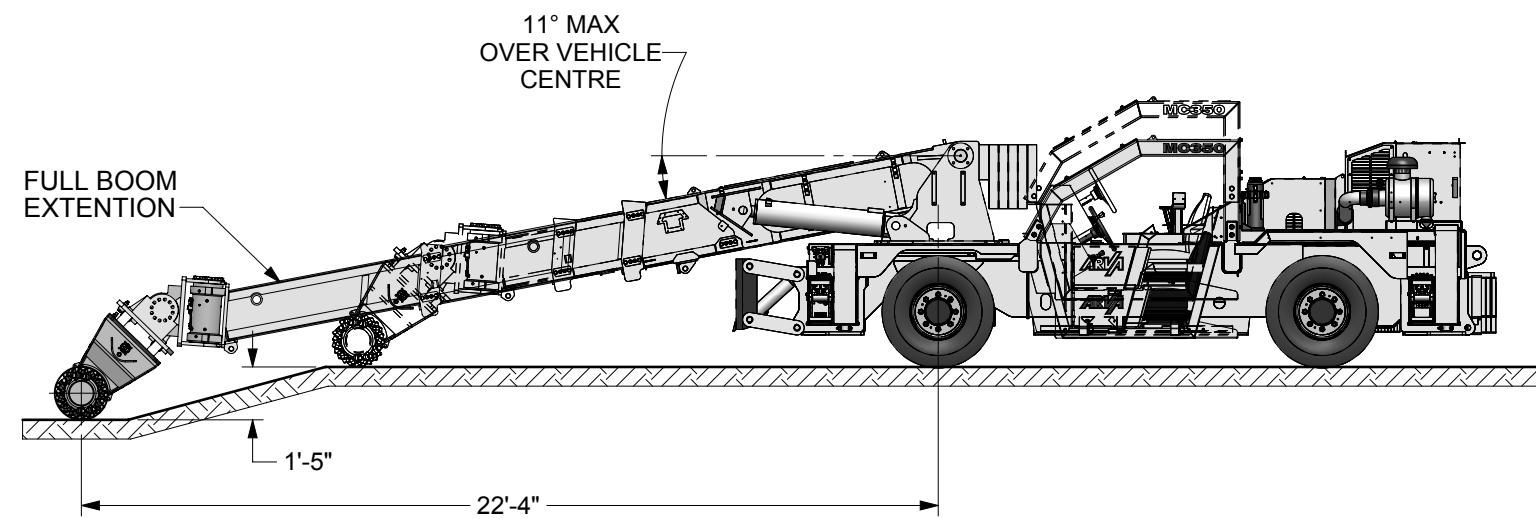
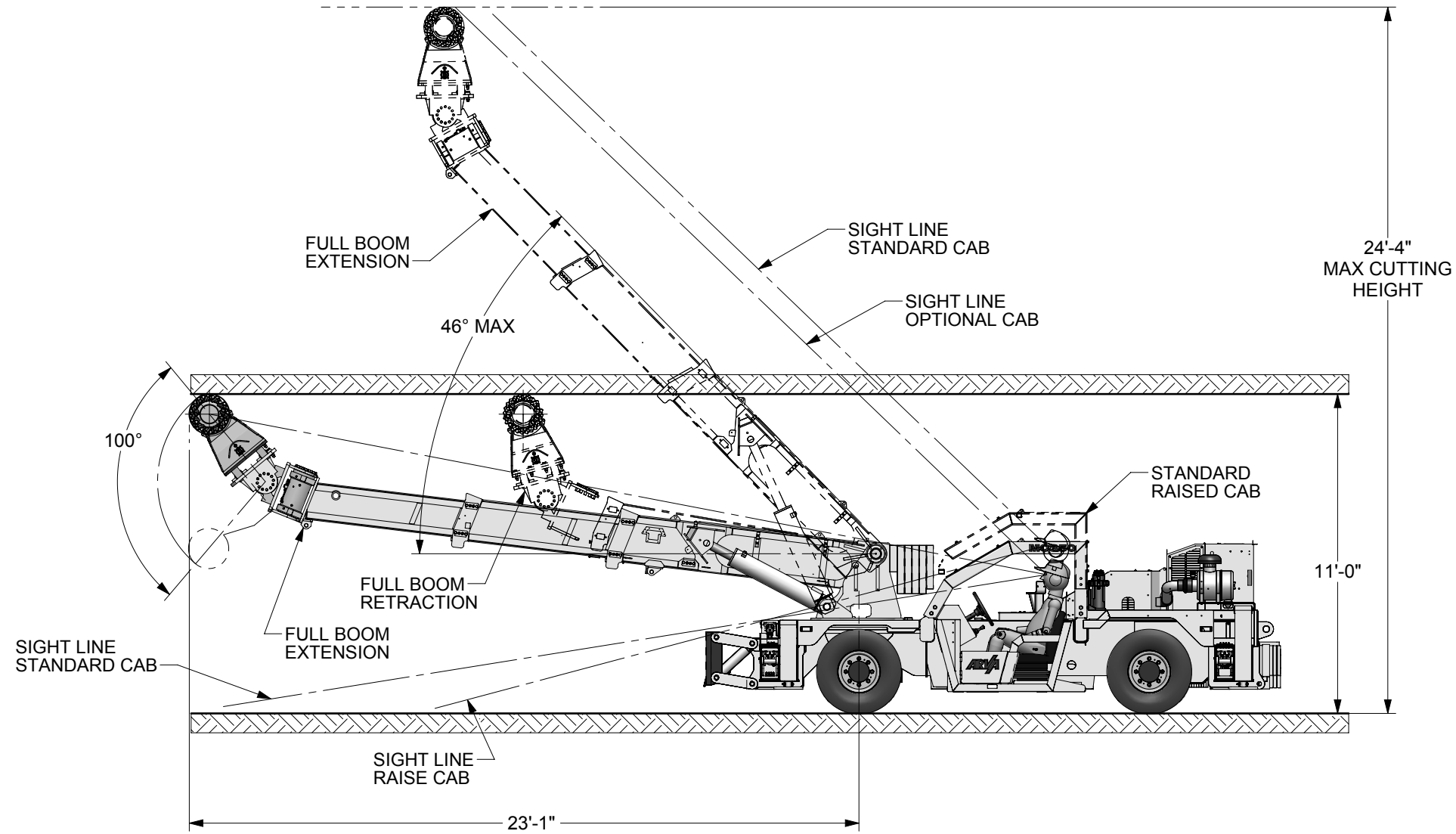
REV	DESCRIPTION	DATE	BY
ARVA INDUSTRIES INC. 43 GAYLORD ROAD ST THOMAS ONT. CAN. N5P 3R9			
MC350 SCALER			
DRAWING BY	MODEL BY	DRAWN DATE (yyMMMdd):	
CHK'D BY	LAST SAVED DATE:		
ASSY DWG	WEIGHT (lbs)		
SIMILAR TO	SHEET 2		
SCALE	DWG NO	REV	
1:50	EP1667		


THIS PRINT AND DESIGN IS THE PROPERTY OF ARVA INDUSTRIES
 IS CONFIDENTIAL AND IS NOT TO BE REPRODUCED WITHOUT OUR
 PERMISSION AND IS TO BE RETURNED UPON REQUEST

DIMENSIONS ARE IN INCHES

FRACTIONAL ± 1/16
 DECIMAL .XX ±.025
 DECIMAL .XXX ±.010
 ANGLES ±1/2°

REMOVE ALL BURRS AND SHARP EDGES



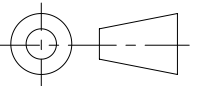
REV	DESCRIPTION	DATE	BY
 ARVA INDUSTRIES INC. 43 GAYLORD ROAD ST THOMAS ONT. CAN. N5P 3R9			
TITLE			
MC350 SCALER			
DRAWING BY	MODEL BY	DRAWN DATE (yyMMdd):	
CHK'D BY	LAST SAVED DATE:		
ASSY DWG	WEIGHT (lbs)		
SIMILAR TO			SHEET 3
SCALE	DWG NO	REV	
1:60	EP1667		

THIS PRINT AND DESIGN IS THE PROPERTY OF ARVA INDUSTRIES
 IS CONFIDENTIAL AND IS NOT TO BE REPRODUCED WITHOUT OUR
 PERMISSION AND IS TO BE RETURNED UPON REQUEST

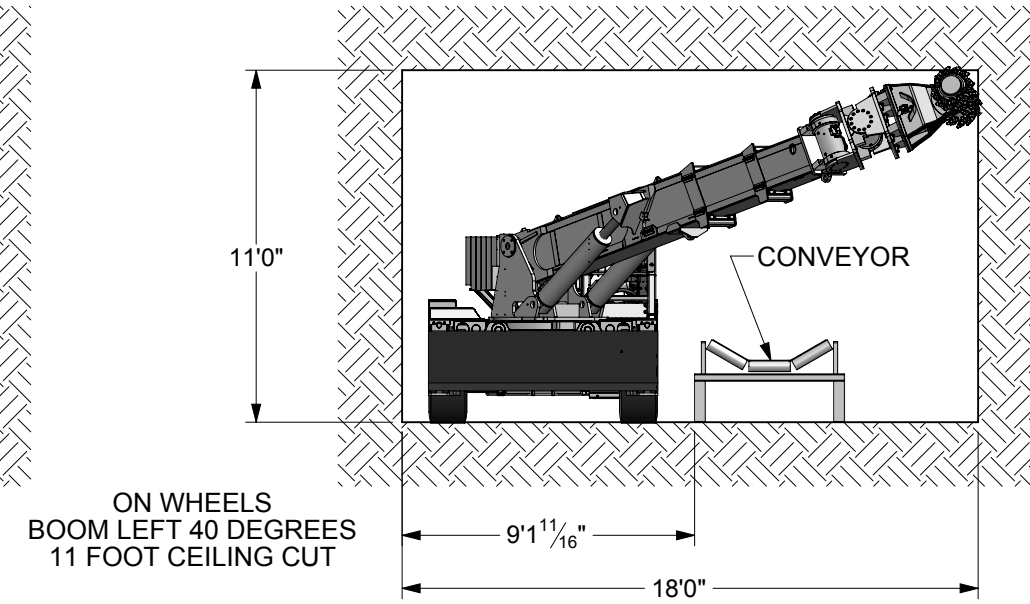
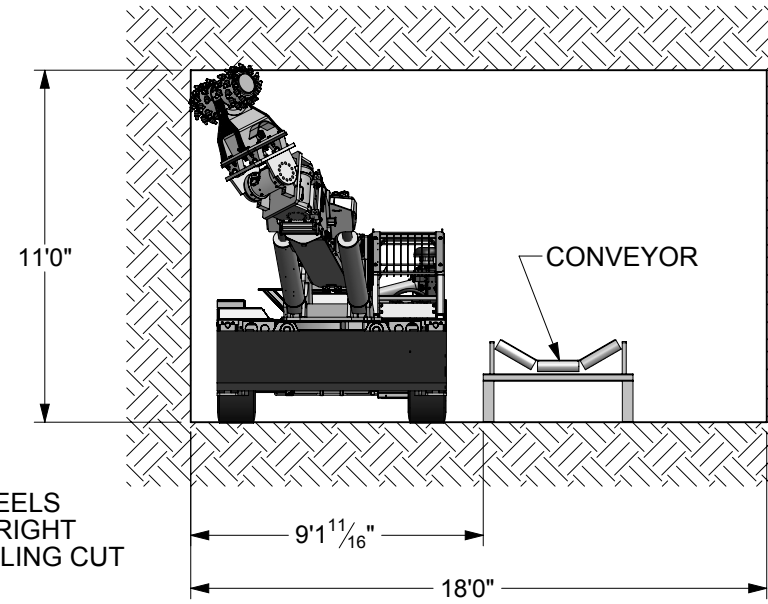
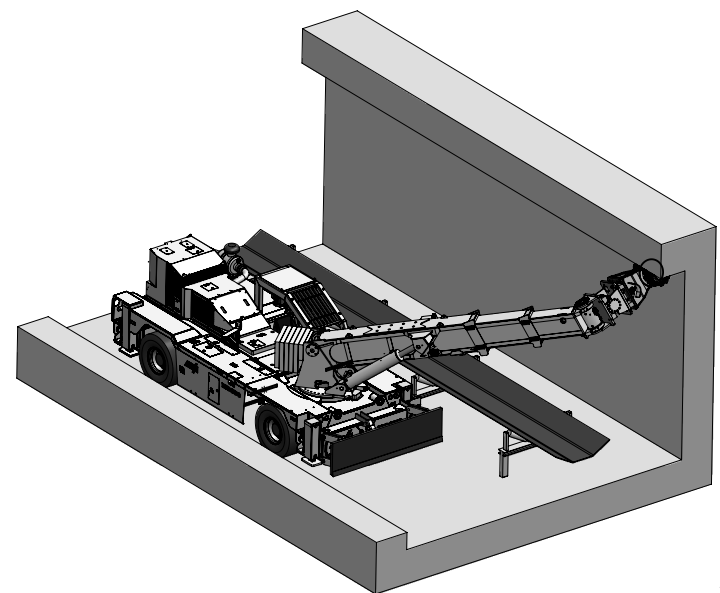
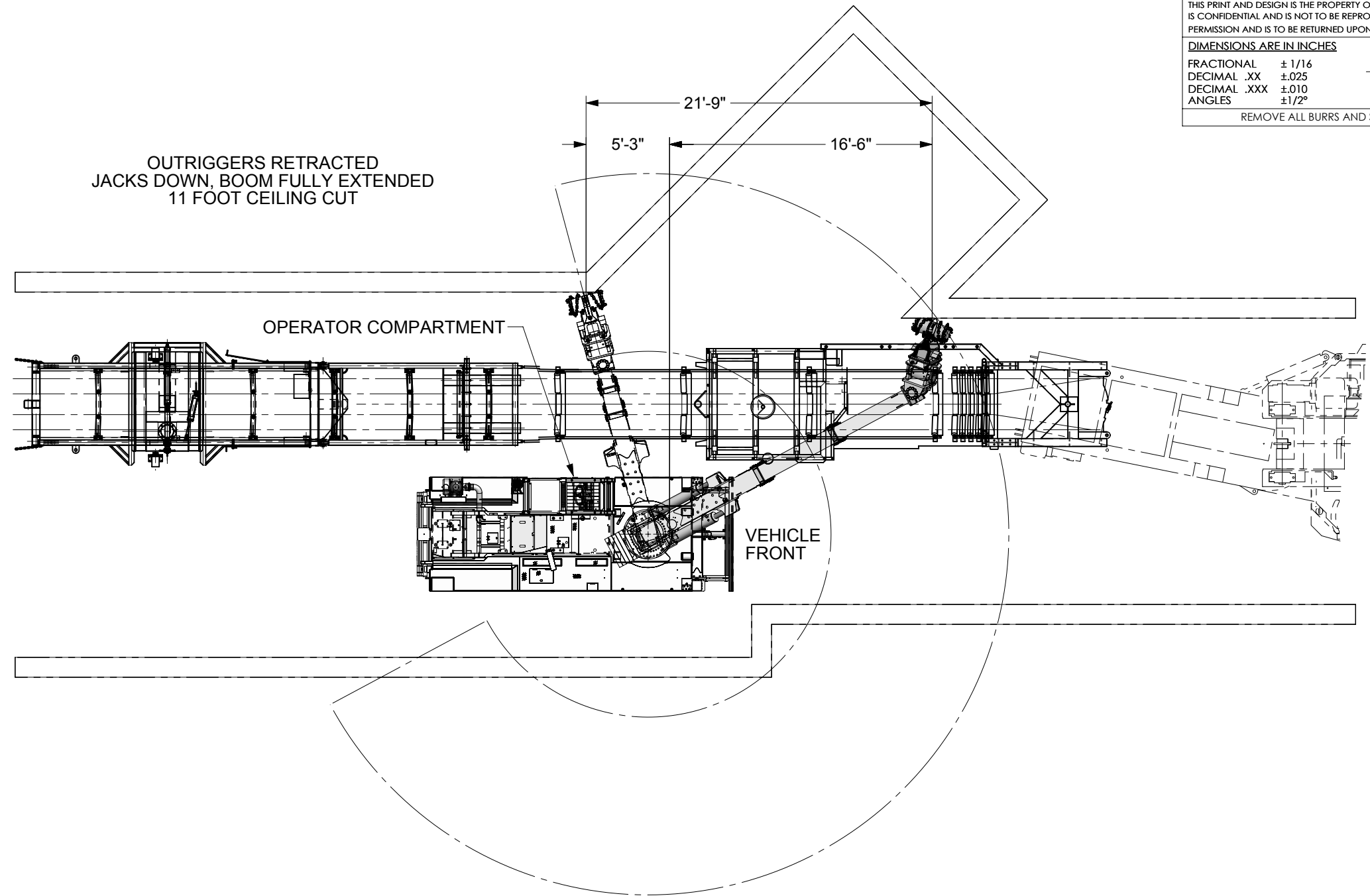
DIMENSIONS ARE IN INCHES


FRACTIONAL ± 1/16
 DECIMAL .XX ±.025
 DECIMAL .XXX ±.010
 ANGLES ±1/2°

REMOVE ALL BURRS AND SHARP EDGES



OUTRIGGERS RETRACTED
 JACKS DOWN, BOOM FULLY EXTENDED
 11 FOOT CEILING CUT



REV	DESCRIPTION	DATE	BY
 ARVA INDUSTRIES INC. 43 GAYLORD ROAD ST THOMAS ONT. CAN. N5P 3R9			
TITLE MC350 SCALER			
DRAWING BY	MODEL BY	DRAWN DATE (yyMMMdd):	
CHK'D BY	LAST SAVED DATE:		
ASSY DWG	WEIGHT (lbs)		
SIMILAR TO	SHEET 4		
SCALE	DWG NO	REV	
1:72	EP1667		

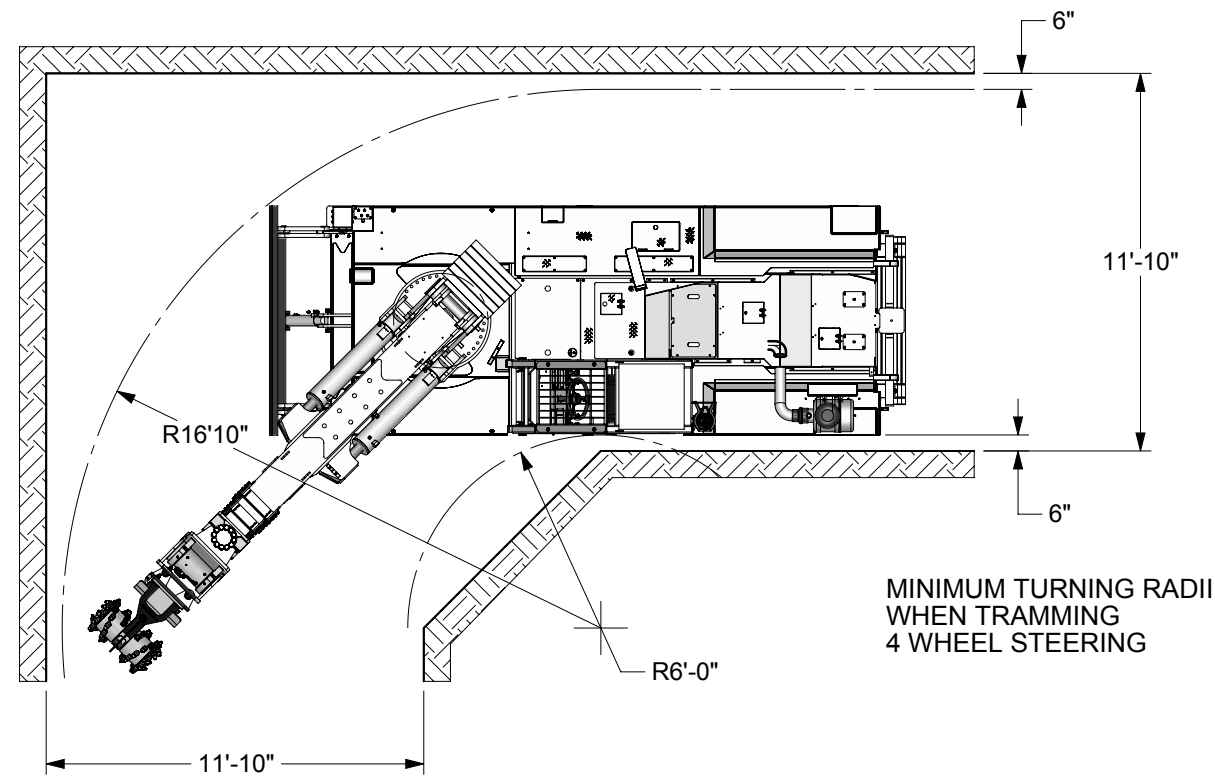
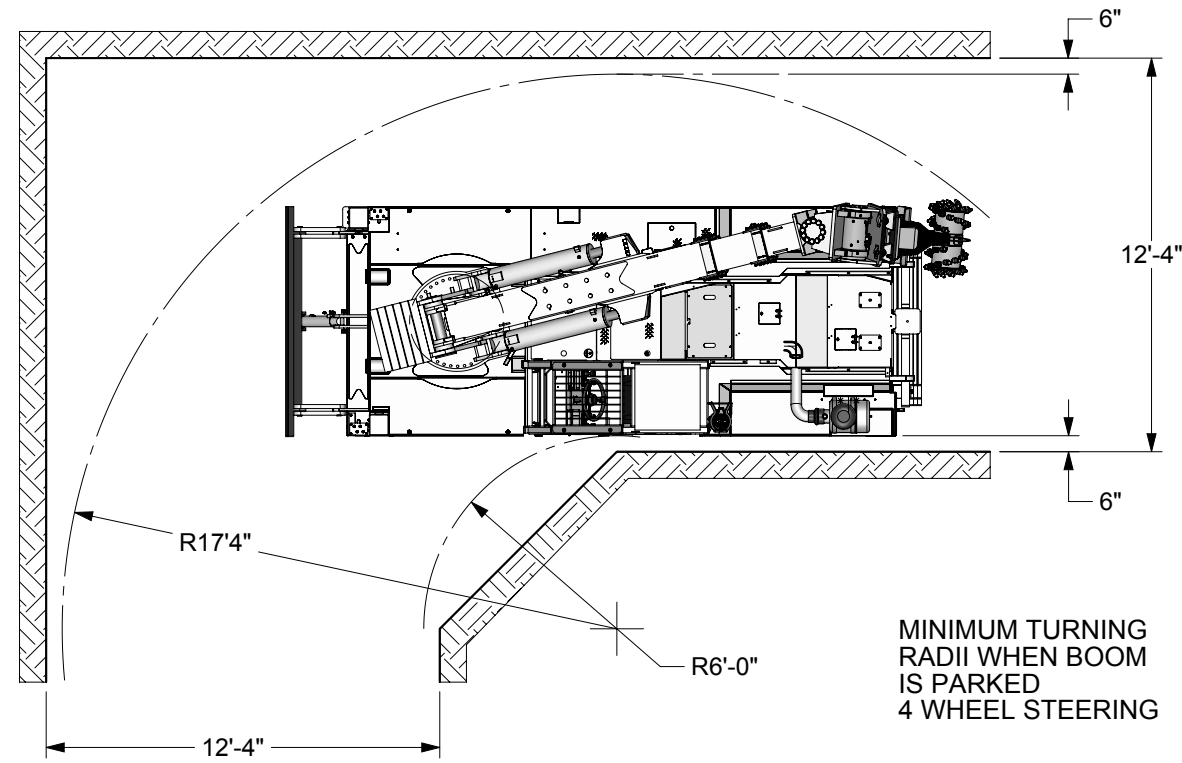
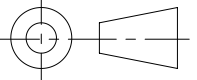
STANDARD VEHICLE SHOWN


THIS PRINT AND DESIGN IS THE PROPERTY OF ARVA INDUSTRIES
 IS CONFIDENTIAL AND IS NOT TO BE REPRODUCED WITHOUT OUR
 PERMISSION AND IS TO BE RETURNED UPON REQUEST

DIMENSIONS ARE IN INCHES

FRACTIONAL ± 1/16
 DECIMAL .XX ±.025
 DECIMAL .XXX ±.010
 ANGLES ±1/2°

REMOVE ALL BURRS AND SHARP EDGES



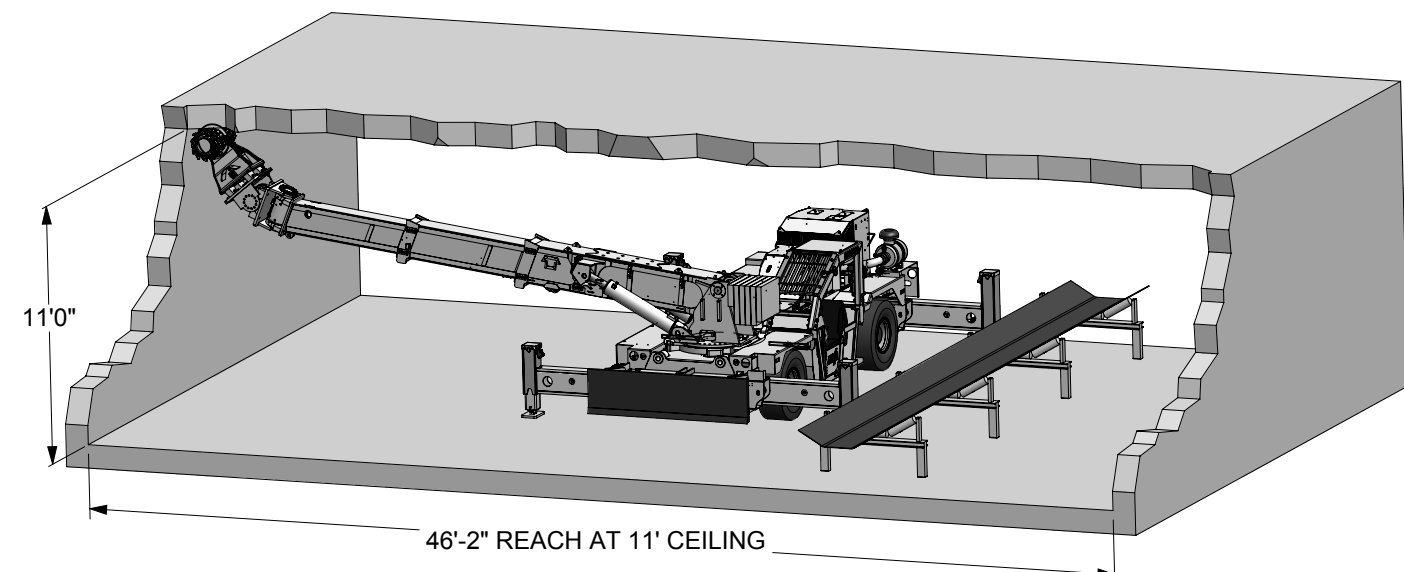
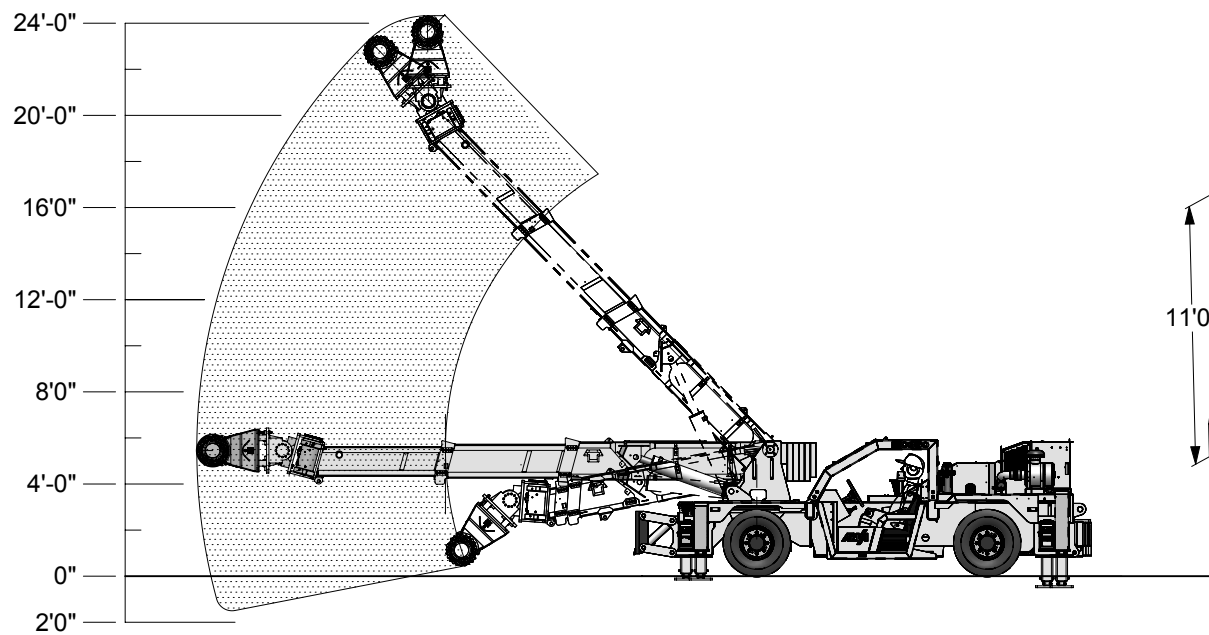
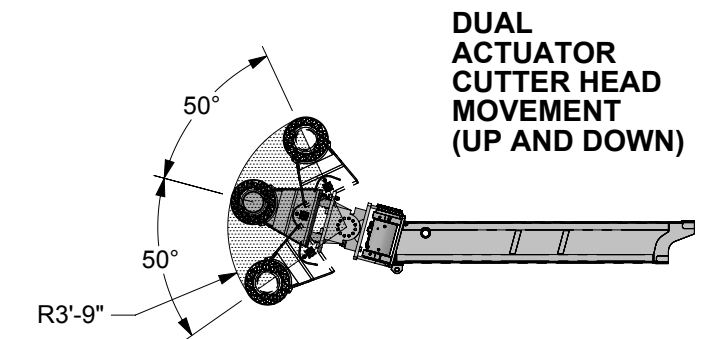
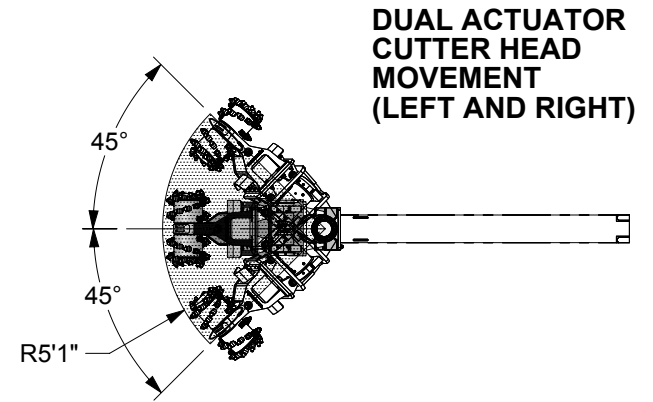
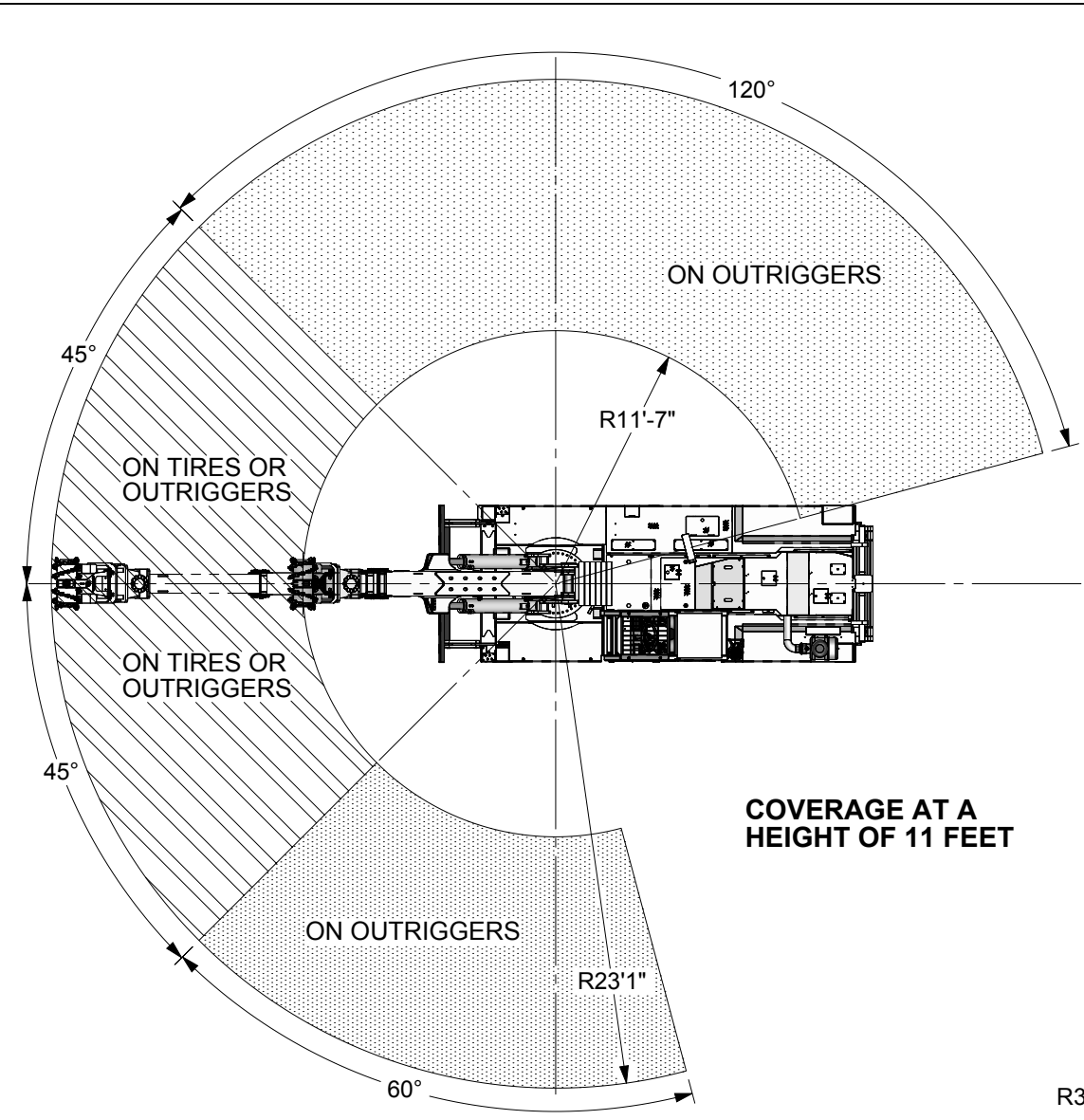
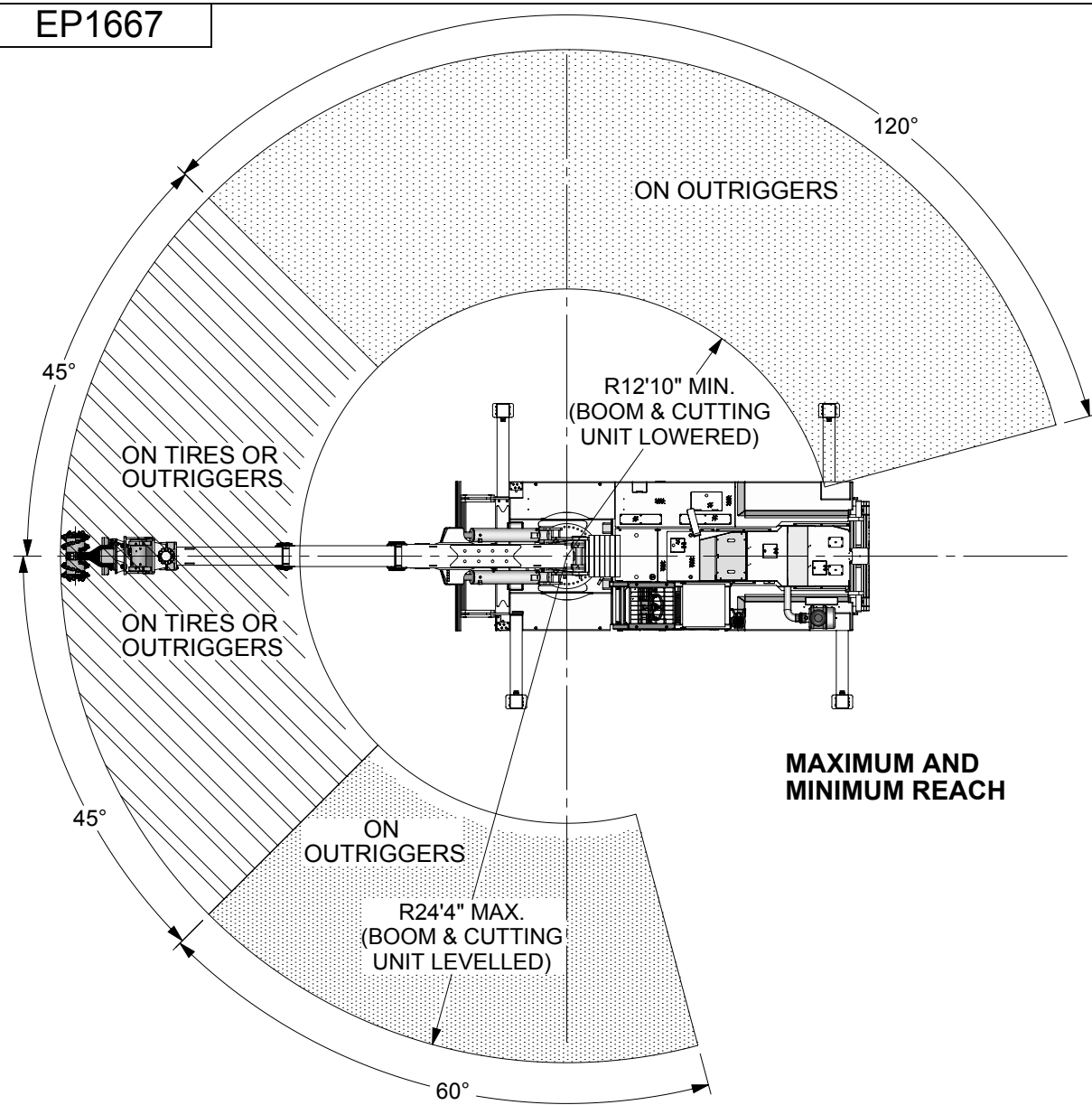
REV	DESCRIPTION	DATE	BY
 ARVA INDUSTRIES INC. 43 GAYLORD ROAD ST THOMAS ONT. CAN. N5P 3R9			
TITLE MC350 SCALER			
DRAWING BY RC	MODEL BY	DRAWN DATE (yyMMMdd):	
CHK'D BY	LAST SAVED DATE:		
ASSY DWG	WEIGHT (lbs)		
SIMILAR TO	SHEET 5		
SCALE 1:72	DWG NO EP1667	REV	


THIS PRINT AND DESIGN IS THE PROPERTY OF ARVA INDUSTRIES IS CONFIDENTIAL AND IS NOT TO BE REPRODUCED WITHOUT OUR PERMISSION AND IS TO BE RETURNED UPON REQUEST

DIMENSIONS ARE IN INCHES

FRACTIONAL	± 1/16
DECIMAL .XX	±.025
DECIMAL .XXX	±.010
ANGLES	±1/2°

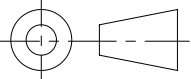
REMOVE ALL BURRS AND SHARP EDGES



REV	DESCRIPTION	DATE	BY
 ARVA INDUSTRIES INC. 43 GAYLORD ROAD ST THOMAS ONT. CAN. N5P 3R9			
TITLE MC350 SCALER			
DRAWING BY	MODEL BY	DRAWN DATE (yyMMdd):	
CHK'D BY	LAST SAVED DATE:		
ASSY DWG	WEIGHT (lbs)		
SIMILAR TO			SHEET 6
SCALE	DWG NO	REV	
1:100	EP1667		

DIMENSIONS ARE IN INCHES

FRACTIONAL	± 1/16
DECIMAL .XX	±.025
DECIMAL .XXX	±.010
ANGLES	±1/2°



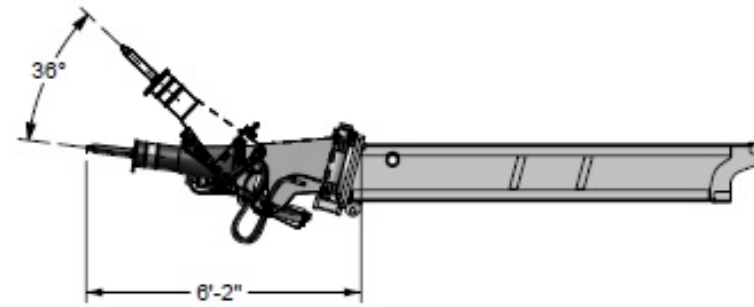
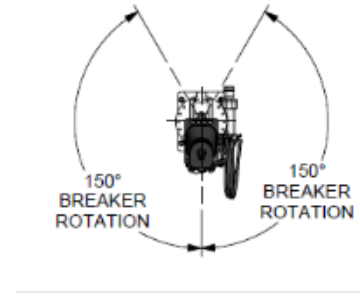
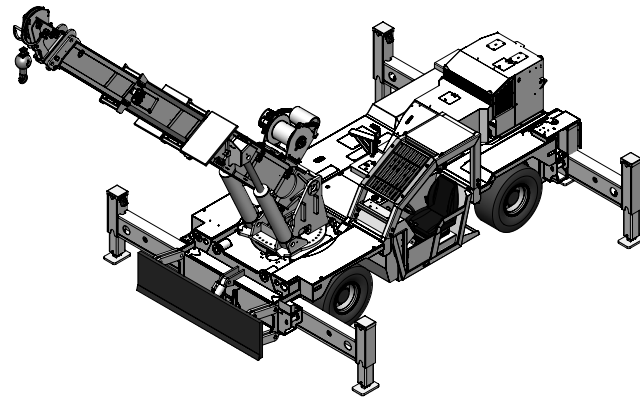
REMOVE ALL BURRS AND SHARP EDGES

OPTIONAL HYDRAULIC BREAKER ATTACHMENT

BLOW RATE: SOFT GROUND, 780 - 1220 BPM
 BLOW RATE: HARD GROUND, 860 - 1340 BPM

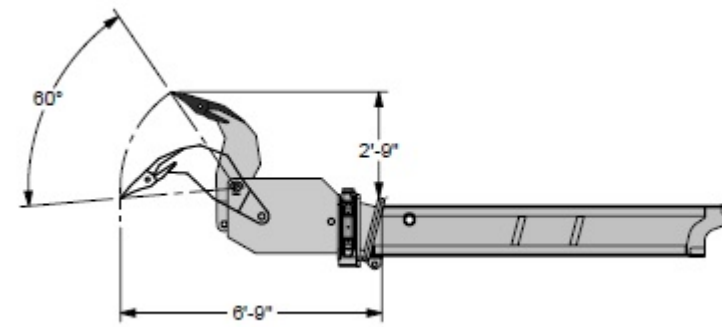
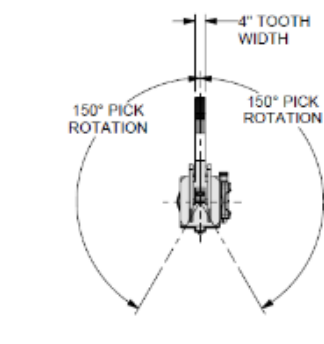
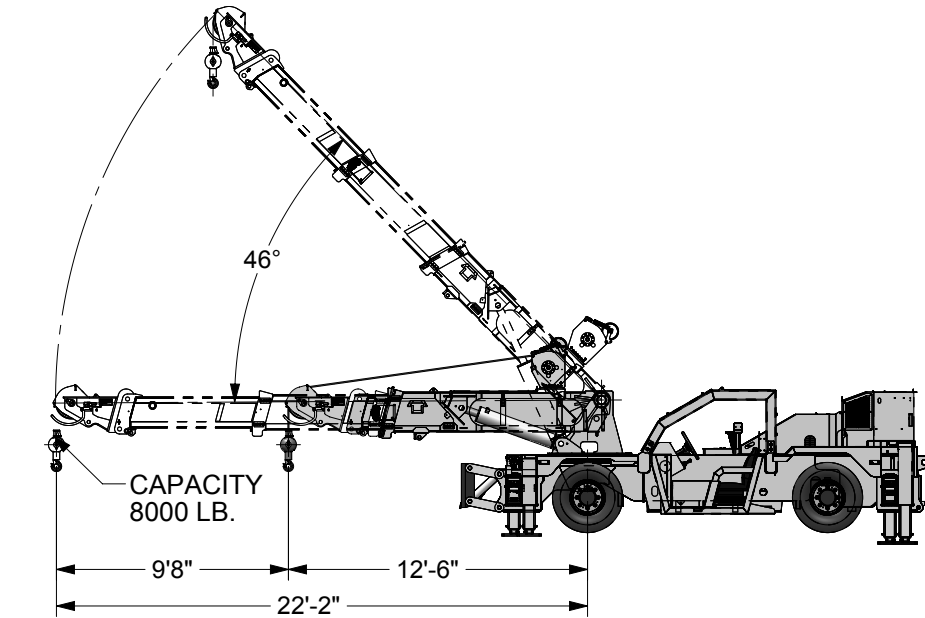
IMPACT CLASS: 150 LBF
 CIMA ENERGY RATING: 153 LBF

BIT DIAMETER: 2.17"
 BIT WORKING LENGTH: 13.0"

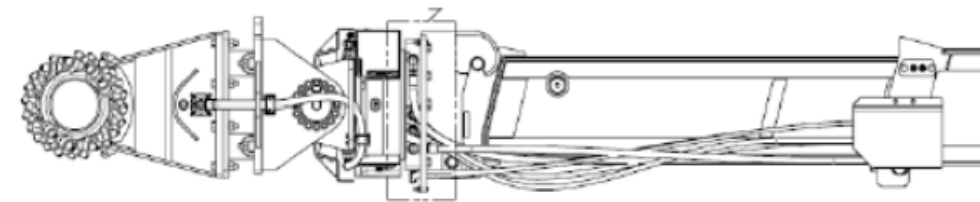
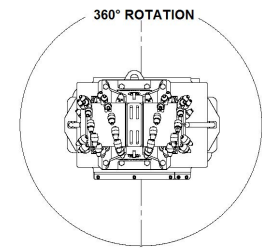


OPTIONAL SCALING PICK ATTACHMENT

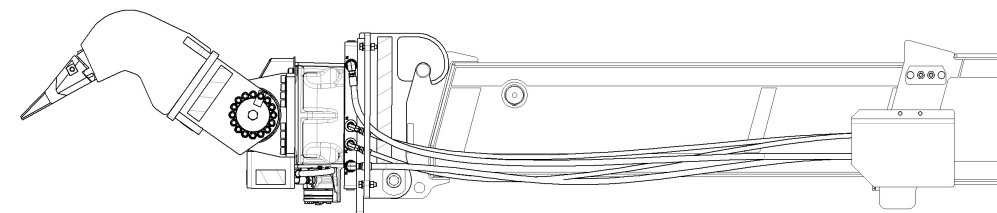
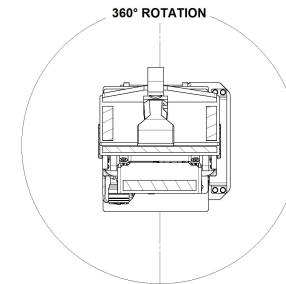
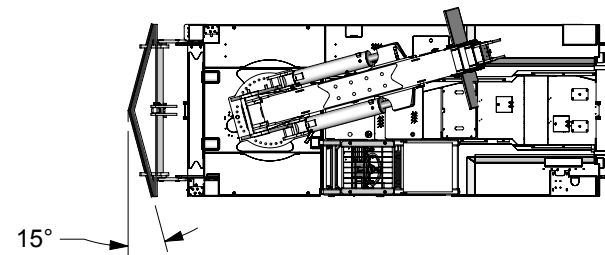
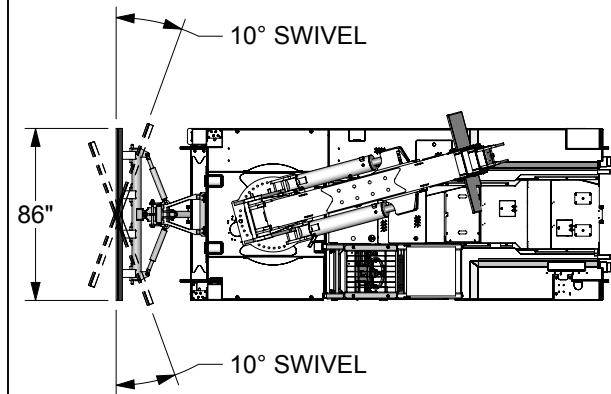
REPLACEABLE TOOTH
 UP TO 30,000 LBS PRYING FORCE
 180° HEAD ROTATION



MC350 WITH OPTIONAL WINCH AND SHEAVE ATTACHMENT

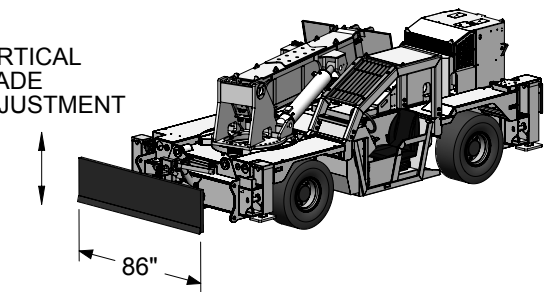


OPTIONAL ROTARY ACTUATOR CUTTING HEAD ATTACHMENT

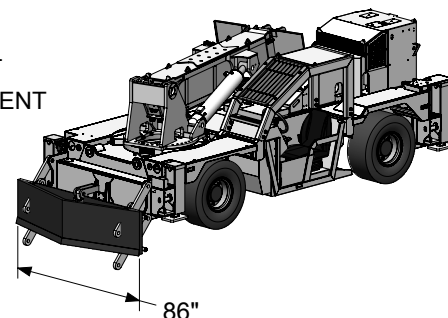


OPTIONAL ROTARY ACTUATOR MANUAL PICK ATTACHMENT

VERTICAL BLADE ADJUSTMENT



VERTICAL BLADE ADJUSTMENT



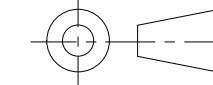
MC350 WITH OPTIONAL SWIVEL BLADE

MC350 WITH OPTIONAL 15 DEGREE V- BLADE

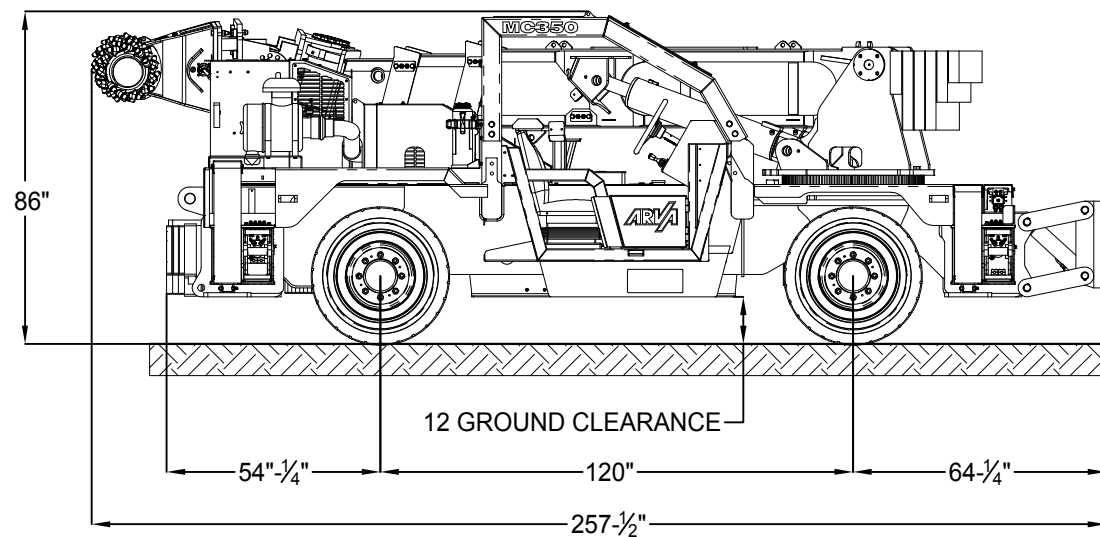
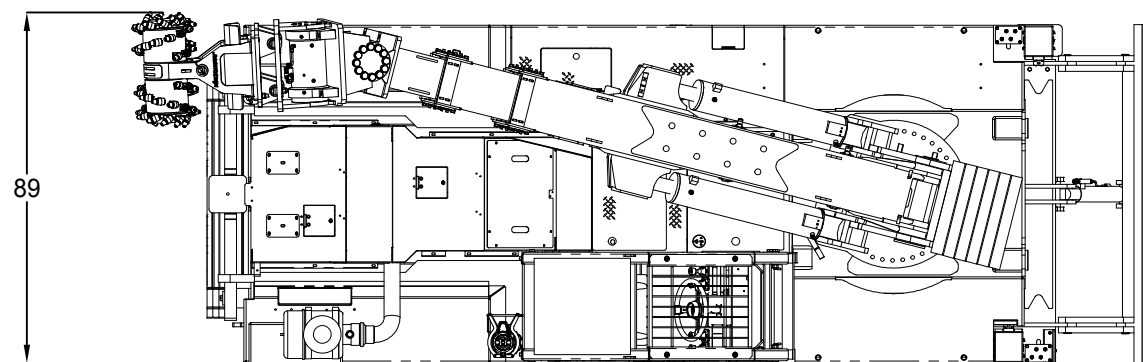
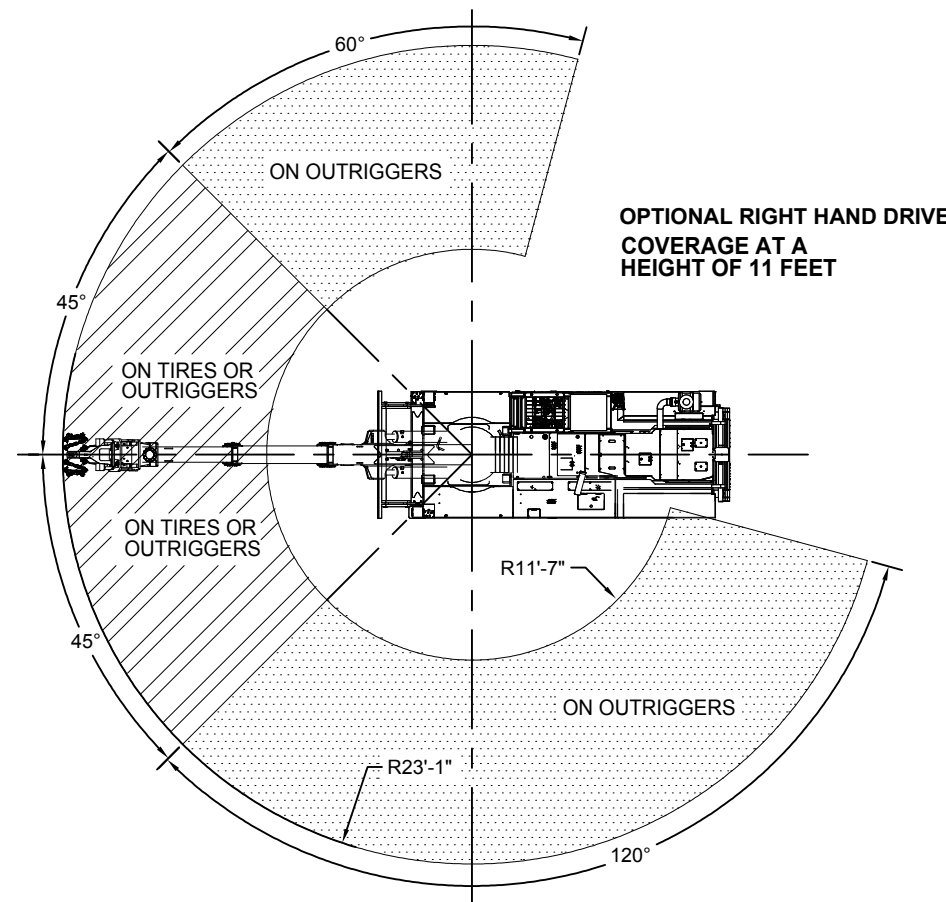
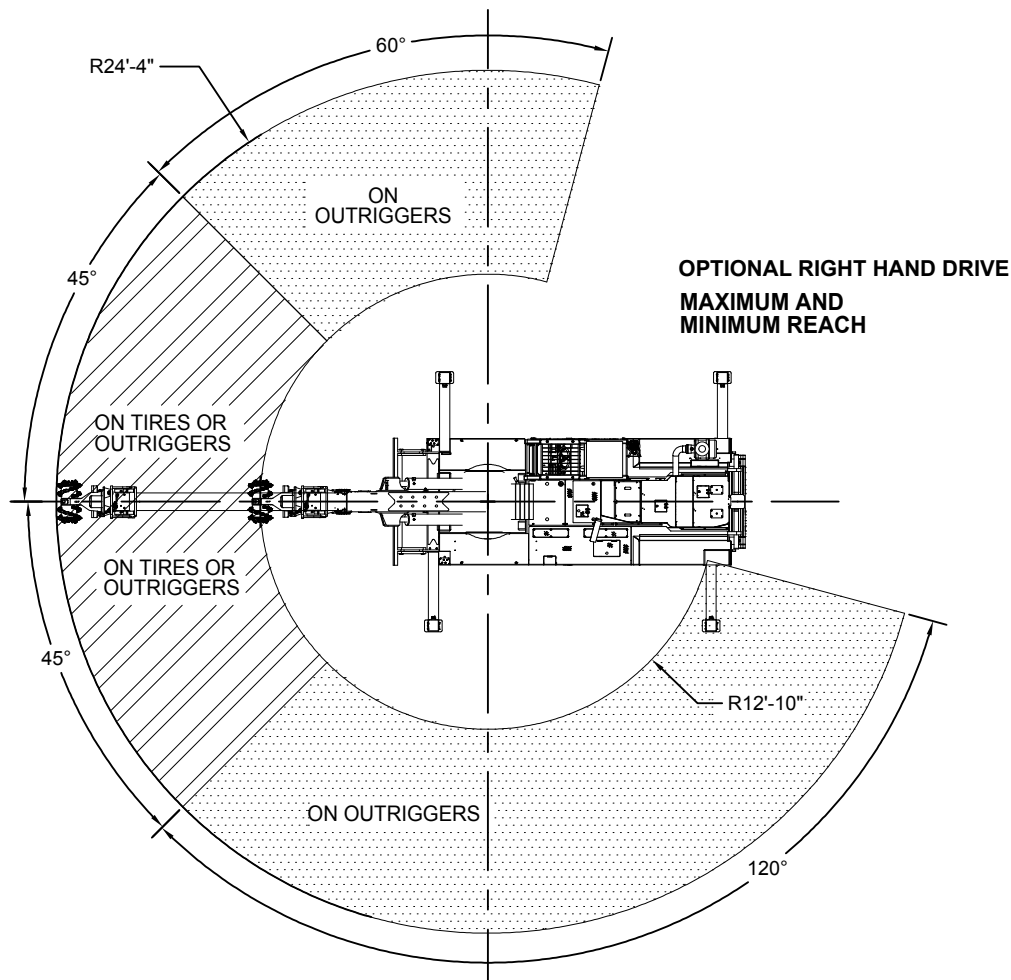
REV	DESCRIPTION	DATE	BY
ARVA INDUSTRIES INC. 43 GAYLORD ROAD ST THOMAS ONT. CAN. N5P 3R9			
TITLE MC350 SCALER - OPTIONS			
DRAWING BY	MODEL BY	DRAWN DATE (yyMMdd):	
ASSY DWG		LAST SAVED DATE:	
SIMILAR TO		WEIGHT (lbs)	
		SHEET 7	
SCALE	DWG NO	REV	
1:96	EP1667		

DIMENSIONS ARE IN INCHES

FRACTIONAL ± 1/16
DECIMAL .XX ± .025
DECIMAL .XXX ± .010
ANGLES ± 1/2°



REMOVE ALL BURRS AND SHARP EDGES



REV	DESCRIPTION	DATE	BY
ARVA INDUSTRIES INC. 43 GAYLORD ROAD ST THOMAS ONT. CAN. N5P 3R9			
TITLE MC350 SCALER			
DRAWING BY RC	MODEL BY M.G.S.	DRAWN DATE (yyMMdd): 2015-06-24	
CHK'D BY		LAST SAVED DATE: 2015-08-17	
ASSY DWG Q1405-130		WEIGHT (lbs) -	
SIMILAR TO		SHEET 8	
SCALE -	DWG NO EP1667	REV P7	